

# TWIST REALTY

## FINKS HIDEAWAY AND US HIGHWAY 165

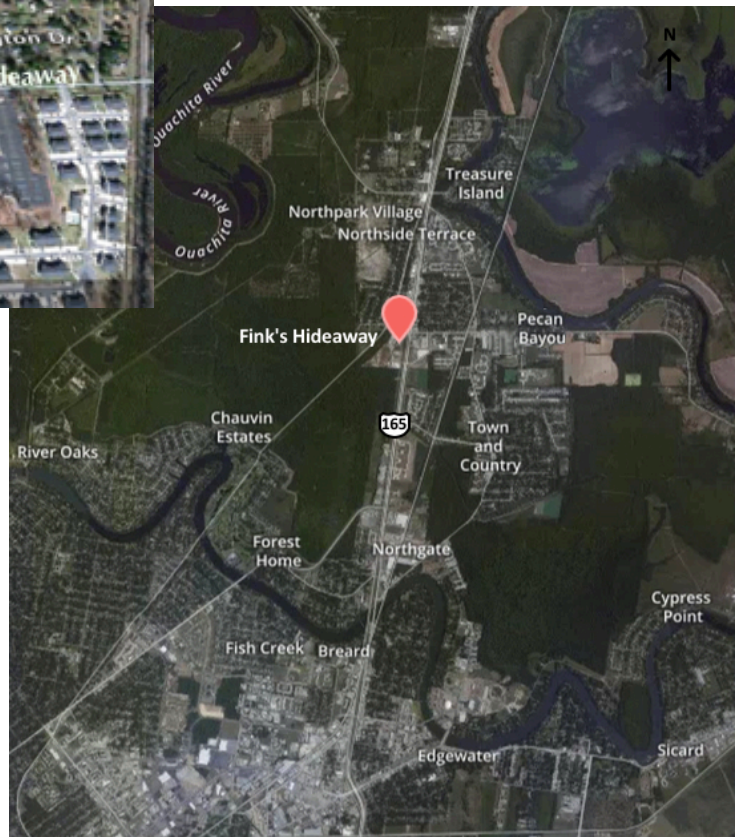
Monroe, LA



The Fink's Hideaway & US-165 shopping center is designed to serve the needs of the surrounding neighborhoods, businesses, and the heavily traveled US-165 corridor. With the established residential sector of Monroe to the south and new growth to the north, the center benefits from

commuters going both north and south each day. Century Link and St. Francis Hospital, two of the largest employers in the region, are located north of the center and anchor the area.

The intersection also boasts Brookshire's Grocery and McDonald's. They add to the Fink's Hideaway/Us-165 intersection, though this site is the only multi-tenant center in the area.



### CONTACT

Beth King  
Sealy Real Estate Services

Phone: 318-698-1103  
[bethk@sealynet.com](mailto:bethk@sealynet.com)

# TWIST REALTY



## DEMOGRAPHICS

	<u>1 Mile</u>	<u>5 Mile</u>	<u>10 Mile</u>
2007 Population	3,190	49,459	127,354
2013 Population Est.	3,252	49,951	128,111
2007 Avg HH Inc.	\$54,661	\$60,230	\$53,079

\*DATA OBTAINED FROM US CENSUS BUREAU.

## PROJECT DATA

Center Size	11,027 SF
Parking	73 SPACES
Parking Ratio	6.65:1000
Traffic Counts (2013)	
US 165	27,529
Finks Hideaway	8,832

\* DATA OBTAINED FROM [WWWAPPS.DOTD.LA.GOV/](http://WWWAPPS.DOTD.LA.GOV/).

